



# ASEAN Plan of Action for Energy Cooperation (APAEC) 2016-2025: The Role of RE

Dr. Sanjayan Velautham  
Executive Director  
ASEAN Centre for Energy

Singapore, 27 October 2016  
Singapore International Energy Week (SIEW) 2016  
RT D RE Outlook for ASEAN – a REmap Analysis “Launching of the Publication”



One Community  
for Sustainable  
Energy

# Disclaimer

*The views, opinions, and information expressed in this presentation were compiled from sources believed to be reliable for information and sharing purposes only, and are solely those of the presenter; do not necessarily reflect the views and opinions of the ASEAN Centre for Energy (ACE) and/or the ASEAN Member States. Any use of this presentation's content should be by ACE's permission.*

# ASEAN – COMMUNITY OF OPPORTUNITIES



Population in 2015: 628.9 million  
area: 4,488,839 km<sup>2</sup>

8.7 % of world's population (2015)

53.04% living in rural areas (2015)

**Total Trade**  
**USD 2.27**  
**Trillion**  
**(2015)**

Annual GDP growth 2013-2015: 4.7 %

Remarkable sustained growth rate

GDP per capita (2015) 3,866.8 US\$

High disparity within the region

electricity consumption 2013: 1,512 kWh/cap

About half of world's average (3,026 kWh/cap)

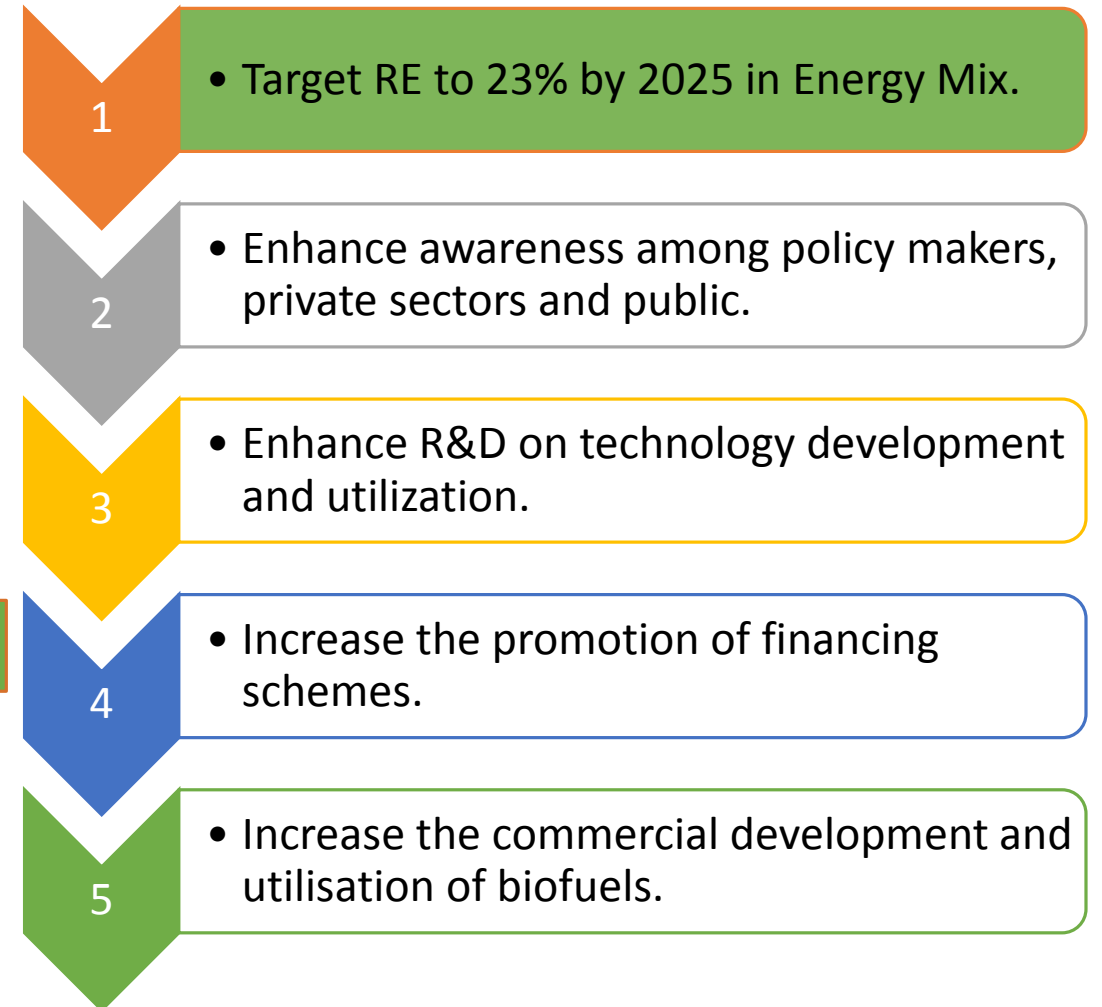
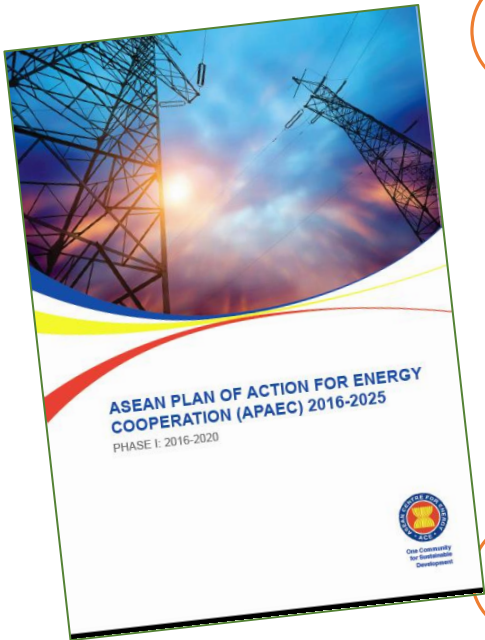
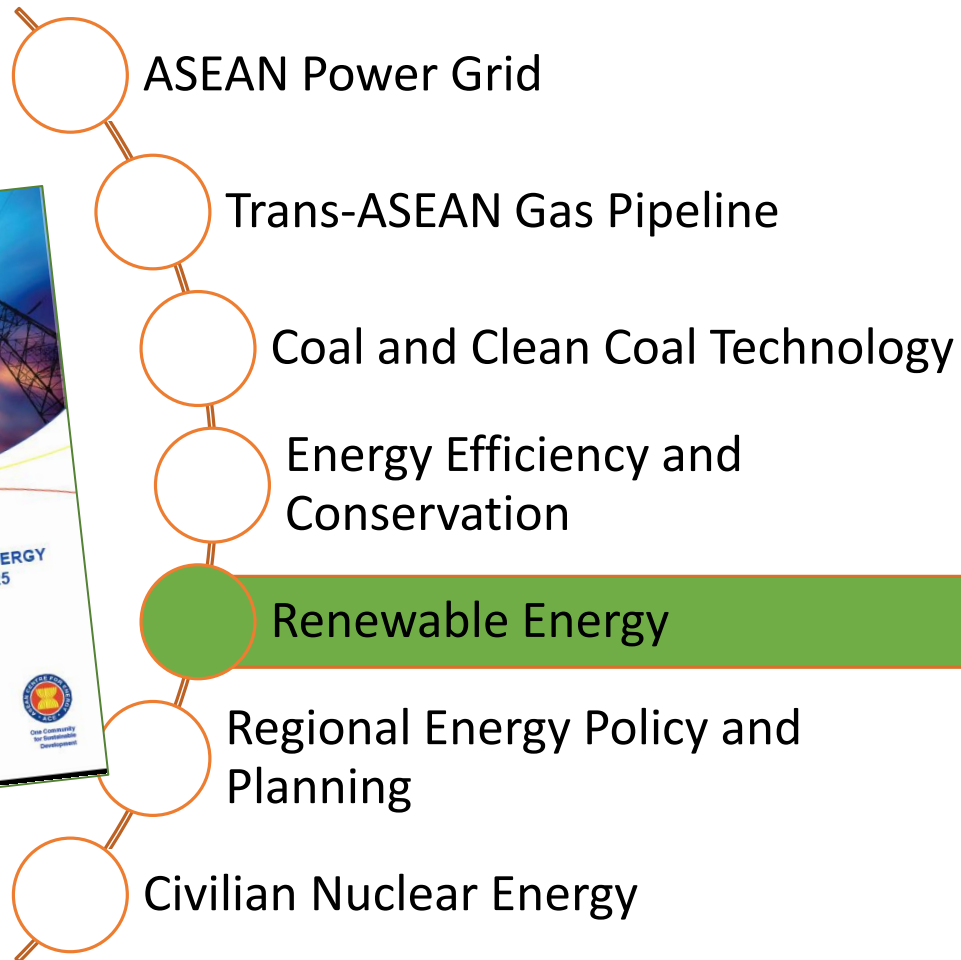
energy intensity in 2013:  
0.119 koe / \$2005p

About three quarters of world's average

The AEC Blueprint.

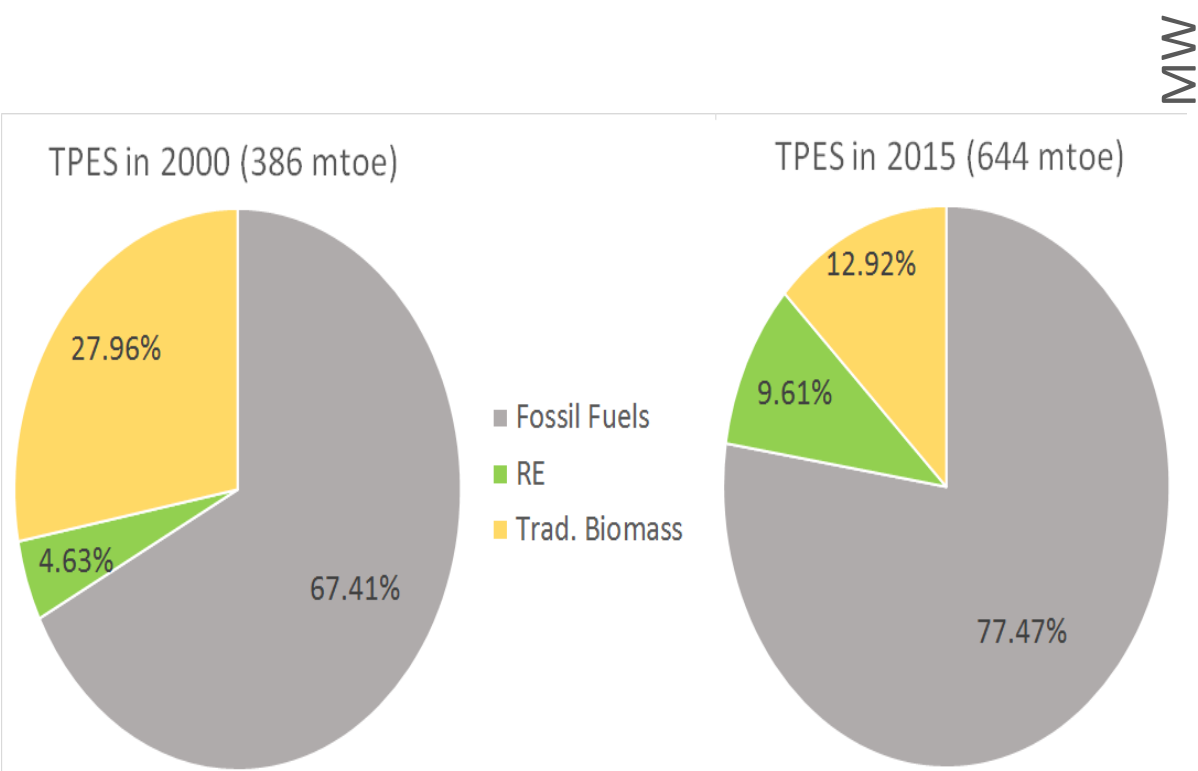
- Effective 2016
- Moving towards a single market and production base

# APAEC – ASEAN ENERGY BLUEPRINT

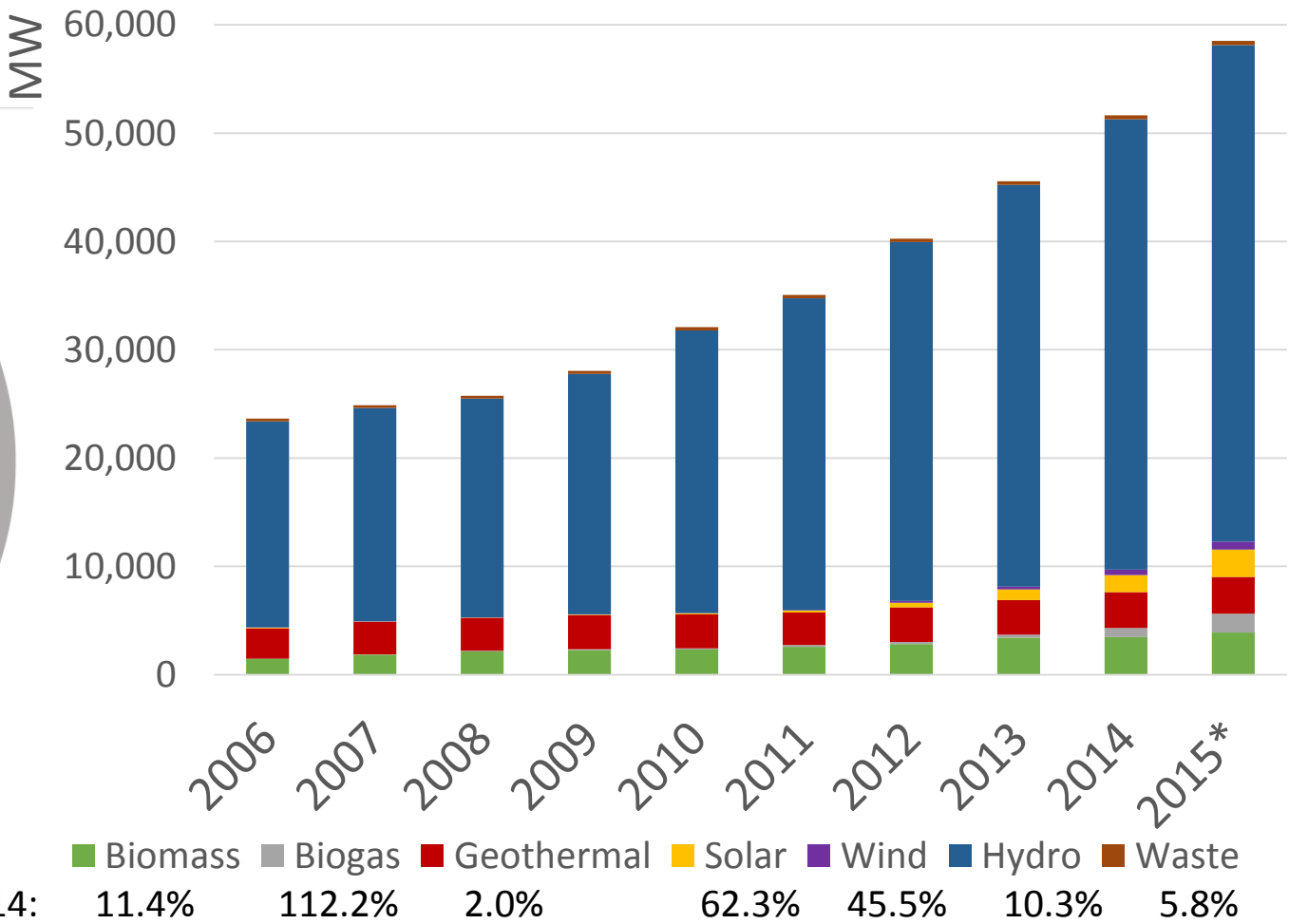


# RE DEVELOPMENT – TPES

# POWER SECTOR

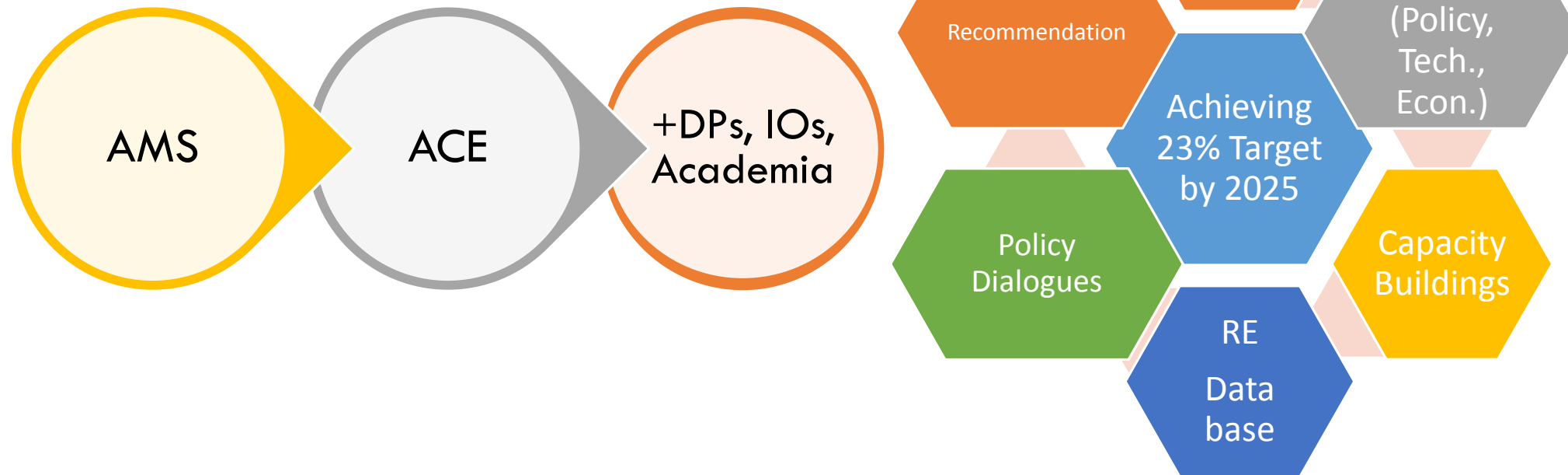


CAGR 2006-14:



## ACE COLLABORATIVE REGIONAL EFFORT ON RE

Providing the advisory for the region in achieving its aspiration target and helping in build the regional capacity.

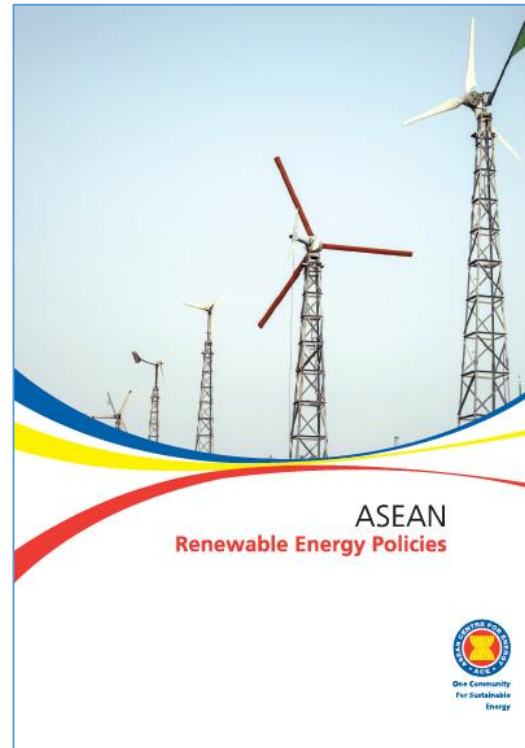


# STUDY – RE POLICIES

## Current Conditions:

RE is progressing, but AMS need a sustainable way to meet energy demand.

RE policies key elements but need to enhance knowledge sharing



Top three affecting policy

1. An appropriate FiT system,
2. Simplified permit procedures,
3. Attractive incentives and financing support mechanism.

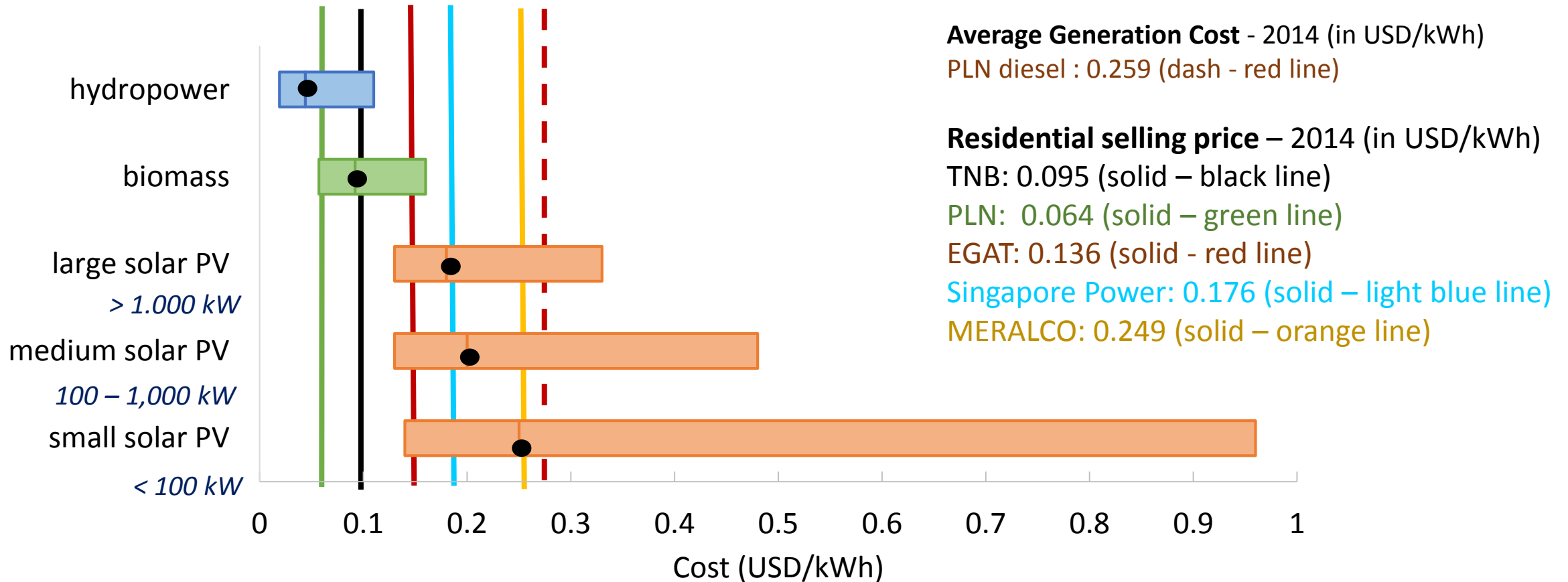
Non-policy factors:

1. Access to financing sources.
2. Updated data.
3. Estimation of the size of the market.
4. The ability of local stakeholders.



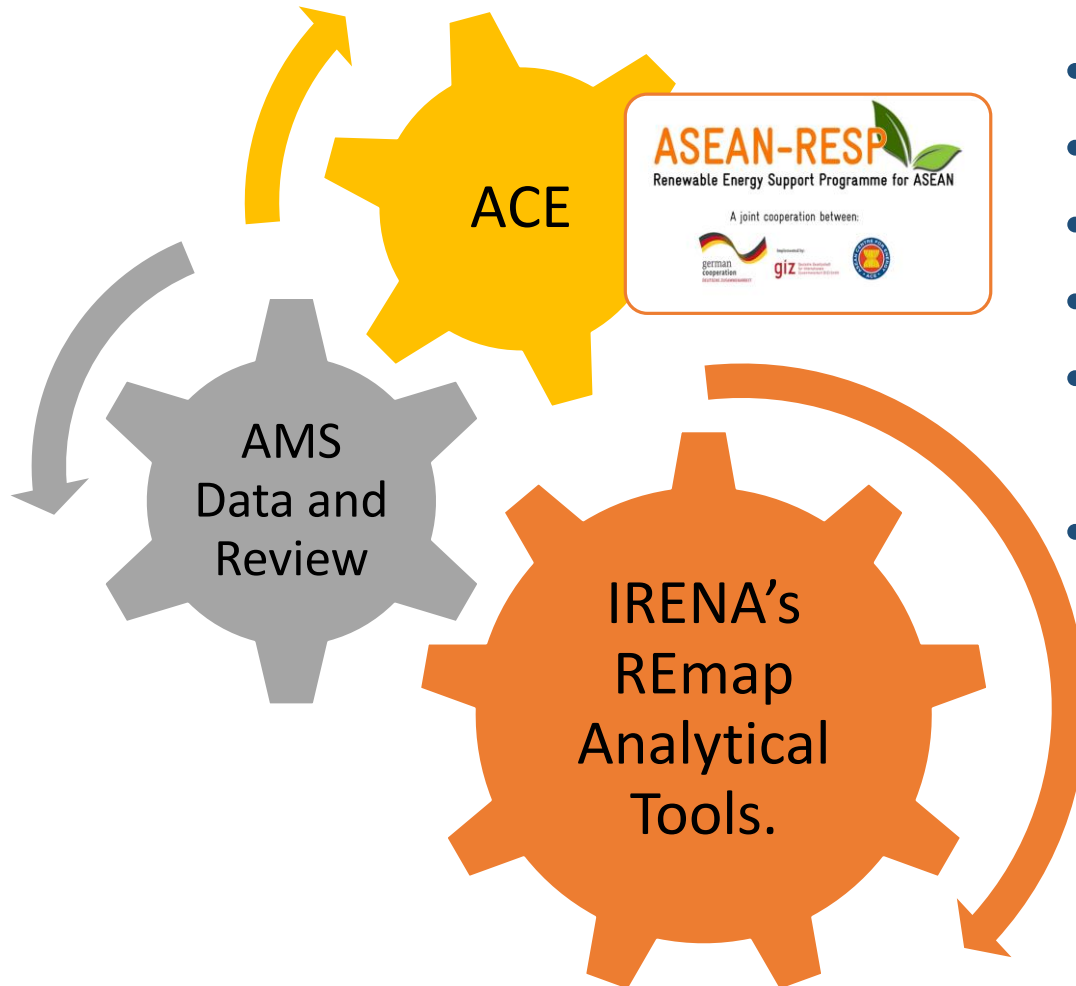
## STUDY - RE ECONOMICS (LCOE)

- ACE's LCOE Study assessed a total of 64 projects information on solar PV, biomass for power and small hydropower from 6 (six) AMS.





## REMAP COLLABORATIVE EFFORTS: ACE AND AMS WITH IRENA AND GIZ



- *35 AMS Working Group*
- *2x Working Meetings*
- *1x hands-on exercise on REmap Tool*
- *3x Webinars*
- *continuous consultation with AMS Policy Makers*
- *presentation at Ministers-CEO Dialogue (in the occasion of the 34<sup>th</sup> ASEAN Energy Ministers Meeting, September 2016 in Nay Pyi Taw, Myanmar).*

## CONCLUSION

- ❖ *ACE shall continue to engage with like minded organization*
- ❖ *In driving to*
  - *catalyse in unifying and strengthening ASEAN Energy Cooperation and Integration*
  - *provide a knowledge depository for AMS*
  - *identifying and surfacing innovative solutions*
- ❖ *Building the in-house capacity of ACE*

Thank you.



# ACE STUDIES – ON POLICY, ECONOMY AND TECHNOLOGY

